



# P1 Orientation for 2026 P1 Cohort

Principal's Address

Thursday, 20 November 2025



# ***Welcome to the Riverside Family !***





# Overview

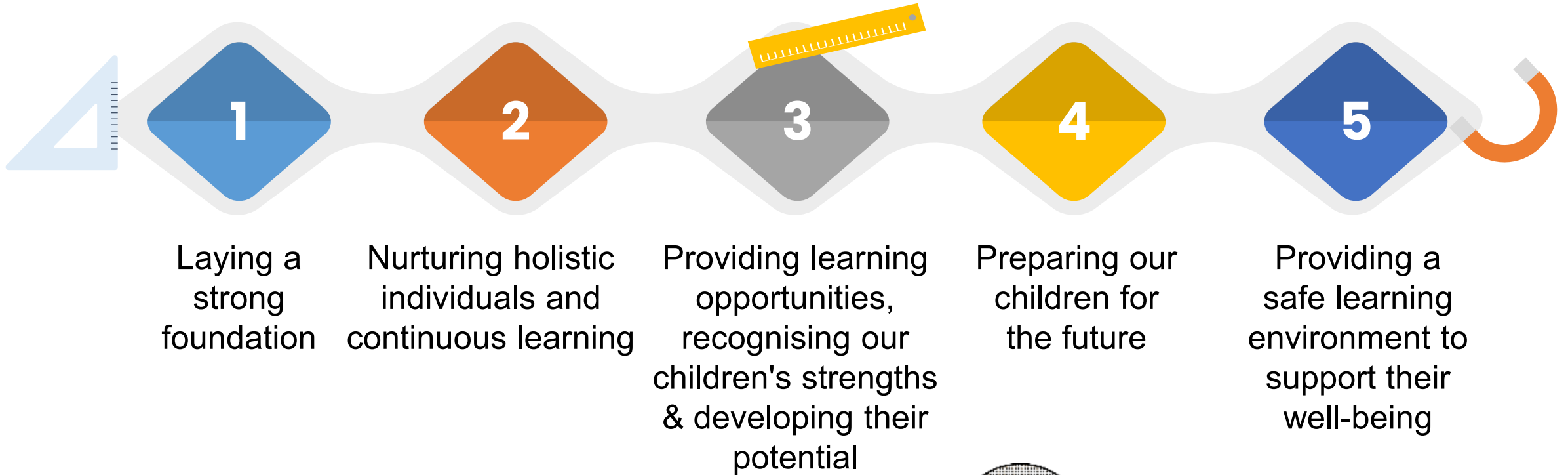
## 1. What is Primary School about?

## 2. Smoothing the transition to Primary 1

## 3. School-Home Partnership



# What is Primary School about?





# Holistic development for Primary 1 includes:

Prioritising the development of soft skills, including values, social-emotional competencies and self-help skills

Focusing on building learning dispositions for Lifelong Learning, including curiosity, confidence and nurturing the joy of learning

Building strong foundations in literacy and numeracy

Strengthening 21<sup>st</sup> Century Competencies and Digital Literacy in an age-appropriate manner



**Note for schools:** Schools may consider elaborating on how each facet of holistic development is strengthened in P1.

# Building Strong Foundations: Knowledge, Skills & Dispositions (KSDs) at the Start of P1

- The lower primary curriculum nurtures students' joy of learning, builds on pre-school foundations, and promotes dispositions and attitudes for lifelong learning.
- The following are professionally determined expectations on what most children should be equipped with at the start of P1. Our teachers will continue to build on these to strengthen our students' foundations and nurture active, curious learners.



## Values, Social-Emotional Competencies, Citizenship Dispositions



## Art



## English Language



## Mathematics



## Mother Tongue Languages



## Music



## Physical Education

<ul style="list-style-type: none"> <li>• Develop understanding of self and manage own behaviours</li> <li>• Communicate, interact and build caring and respectful relationships with others</li> <li>• Take responsibility for own actions</li> </ul>	<ul style="list-style-type: none"> <li>• Enjoy Participating in Art</li> <li>• Express Ideas and Feelings through Art</li> <li>• Demonstrate Awareness of Art from Different Cultural Groups</li> </ul>	<ul style="list-style-type: none"> <li>• Listen and Speak for Enjoyment and Information</li> <li>• Read with Enjoyment and Understanding</li> <li>• Communicate Ideas and Information through Writing or Using Symbols or Letter-Like Shapes</li> </ul>	<ul style="list-style-type: none"> <li>• Basic Understanding of Numbers Up To 10</li> <li>• Compare Quantities Between Two Groups of Objects within 10</li> <li>• Recognise Simple Patterns</li> </ul>	<ul style="list-style-type: none"> <li>• Enjoy and Show an Interest in Learning Mother Tongue Language</li> <li>• Enjoy and Show an Interest in Listening and Speaking in Mother Tongue Language</li> <li>• Demonstrate Awareness of Local Ethnic Culture</li> </ul>	<ul style="list-style-type: none"> <li>• Enjoy Participating in Music and Movement Activities</li> <li>• Express Ideas and Feelings through Music and Movement Activities</li> <li>• Demonstrate Awareness of Music and Movement from Different Cultural Groups</li> </ul>	<ul style="list-style-type: none"> <li>• Enjoy Physical Activities</li> <li>• Display Coordination in Motor Tasks</li> <li>• Demonstrate Awareness of Healthy Habits and Safety</li> </ul>
-------------------------------------------------------------------------------------------------------------------------------------------------------------------------------------------------------------------------------------------------------	---------------------------------------------------------------------------------------------------------------------------------------------------------------------------------------------------------	---------------------------------------------------------------------------------------------------------------------------------------------------------------------------------------------------------------------------------------------------------	--------------------------------------------------------------------------------------------------------------------------------------------------------------------------------------------------------	----------------------------------------------------------------------------------------------------------------------------------------------------------------------------------------------------------------------------------------------------------------------	----------------------------------------------------------------------------------------------------------------------------------------------------------------------------------------------------------------------------------------------------------------------------	--------------------------------------------------------------------------------------------------------------------------------------------------------------------------------------------



# Building Strong Foundations: How is it achieved?

**Play** is an essential feature that taps students' inquisitiveness and ignites a self-sustaining passion for learning.

**Differentiated support** for children with differing learning needs

Teachers **pace** teaching and adopt **developmentally appropriate, engaging pedagogies** to deepen learning.

**No examinations and weighted assessments at P1 and P2**

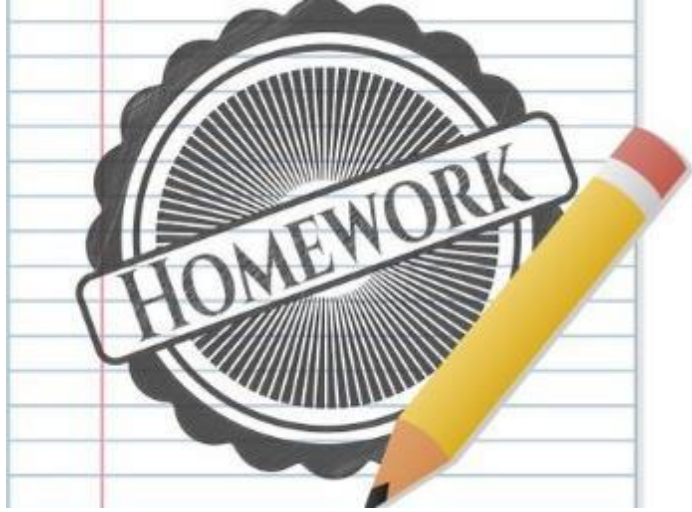
to provide more time and space to settle into a formal school setting, build relationships and develop the necessary skills and attitudes towards learning.



## **Note for schools:**

*Schools may wish to provide example(s) for each aspect, where relevant (e.g., schools may share how feedback will be provided by the school to inform parents on the learning progress of the child, and how regularly such information will be shared to manage expectations).*

# Learning in school and at home



- **Homework Policy** is in place to guide parents on the extent of offline and occasional online homework that is given to the students.
- Homework helps teachers to assess students' understanding of their learning so that timely feedback can be given to support their learning.



- **Digital Tools** used by to support and complement classroom teaching and learning, e.g. Singapore Student Learning Space (SLS), *<insert other EdTech platforms that schools use e.g. eZhishi, Koobits>*



*SLS onboarding information will be shared with parents via PG announcement by school.*

## What is SLS?

Our national online learning portal with curriculum-aligned resources for students to learn at their own pace and collaboratively.

## How and when will P1 students use SLS?

Students will learn with technology progressively, with light use at P1 [after Term 1] in an age-appropriate manner.

SLS homework are occasionally used to reinforce learning.



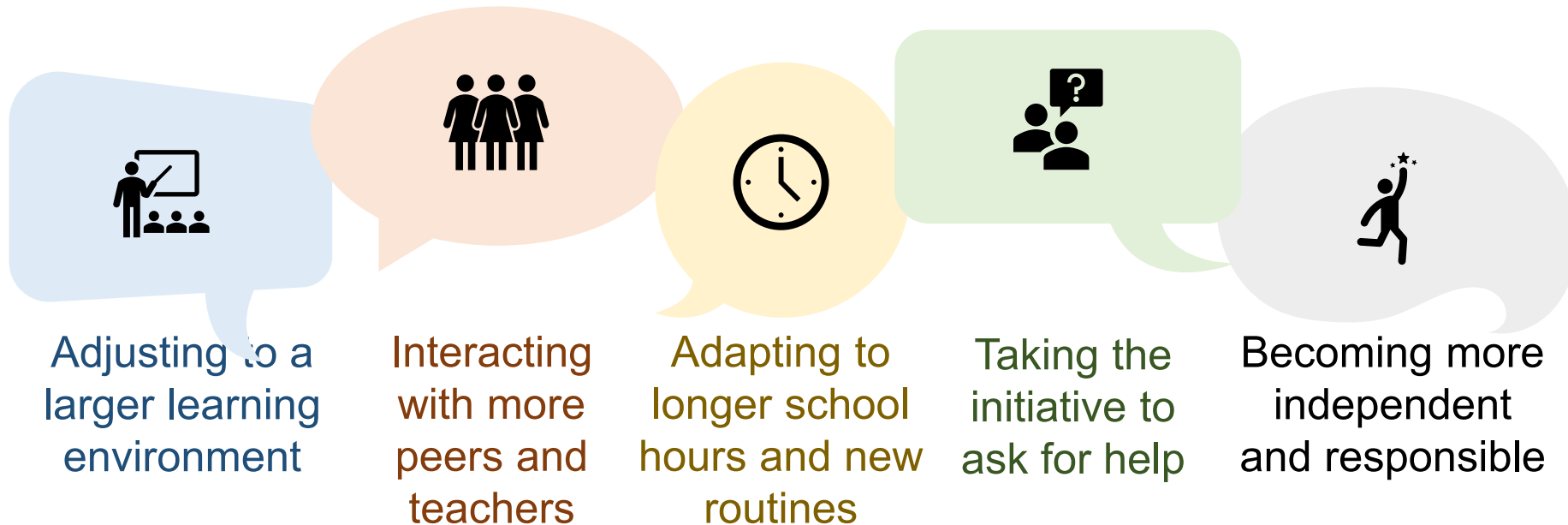
# Smoothening the transition to Primary 1

When your child enters primary school, their experience will include:



# How can you prepare your child for Primary 1?

You can start talking to your child about the following:



**Try these conversation starters:**

**Mummy had an enjoyable day at work today. Let's share which was the most enjoyable part of our day.**

**Let's both remember someone that we met today who did a kind deed for us?**

**I learnt something new at work today. I am sure you did too. Can we teach each other what we learnt?**



# How else can you support your child?

## Support

your child and encourage them to overcome challenges with your care

## Affirm

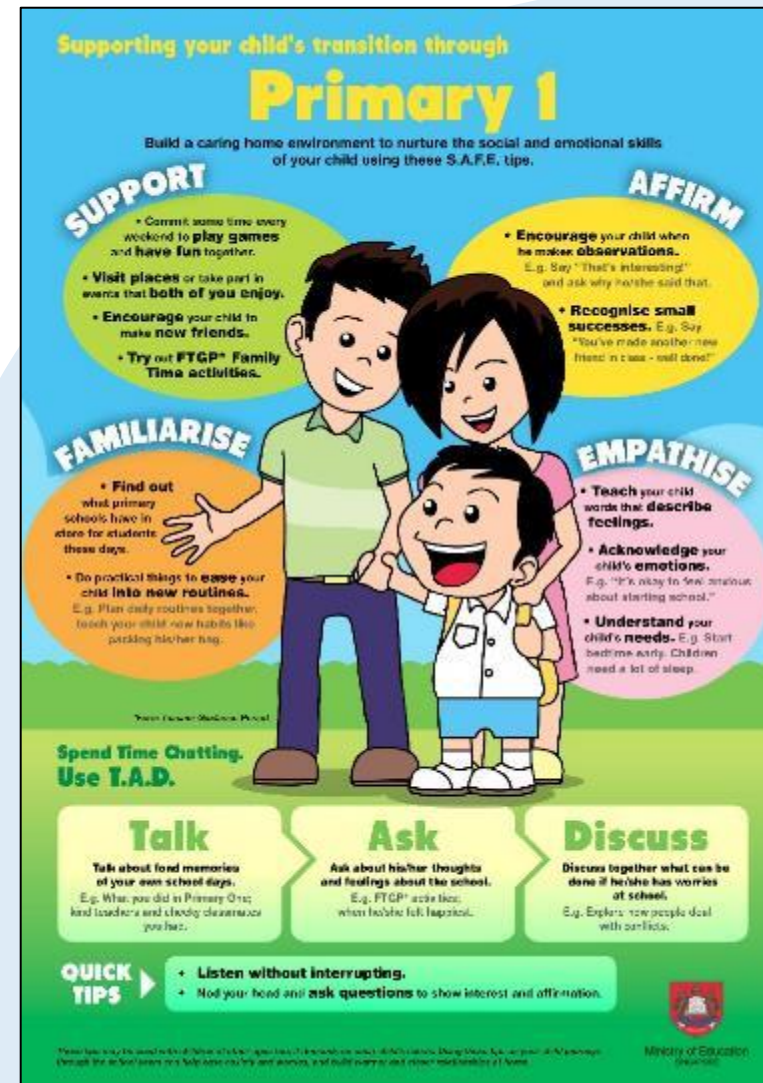
your child by recognising small successes and praising their efforts

## Familiarise

your child with new routines gradually and share your experiences in primary school

## Empathise

with and acknowledge your child's feelings



# Relating Well to Others

Build your child's interpersonal skills by:

01

**Modelling the use of friendly and polite phrases**

"Hi! My name is...What is your name?"

"Could you help me with..."

02

**Providing opportunities for your child to share and take turns during playtime with other children**

03

**Modelling respectful interactions**

"May I please..."

"It's okay if I can't join in..."

"I am sorry I ..."

**MAKE NEW FRIENDS**

**What your child may learn in school**

**JOINING IN ACTIVITIES**

- 1 Choose a good time.
- 2 Look at the person.
- 3 Ask in a friendly way, "Hi, may I join you?"
- 4 Accept the answer by saying "Thank you" or "Okay".



**What you can do at home**

**SAY HELLO AND SMILE**

Hi!

My name is ...!



Practise skill steps with your child to help her/him relate with others and make friends easily. Encourage them to say hello, greet good morning and smile at their new friends and teachers. These greetings are a great way to connect with people.

Do a short role-play with your child to practise these steps for joining in activities:

- saying hello with a smile and introducing him/herself
- asking politely if he/she can join the group
- thanking them for choosing to include him/her
- saying and feeling okay even if they choose not to

Are you excited to meet your new friends? What do you do or say when you meet your new classmates or join them in group activities? Let's try it!

Explain how doing the above helps him/her to:

- make others feel comfortable
- prevent conflict with new classmates
- be confident



Read more: <https://www.schoolbag.sg/story/how-to-help-your-child-ace-the-first-week-of-school>

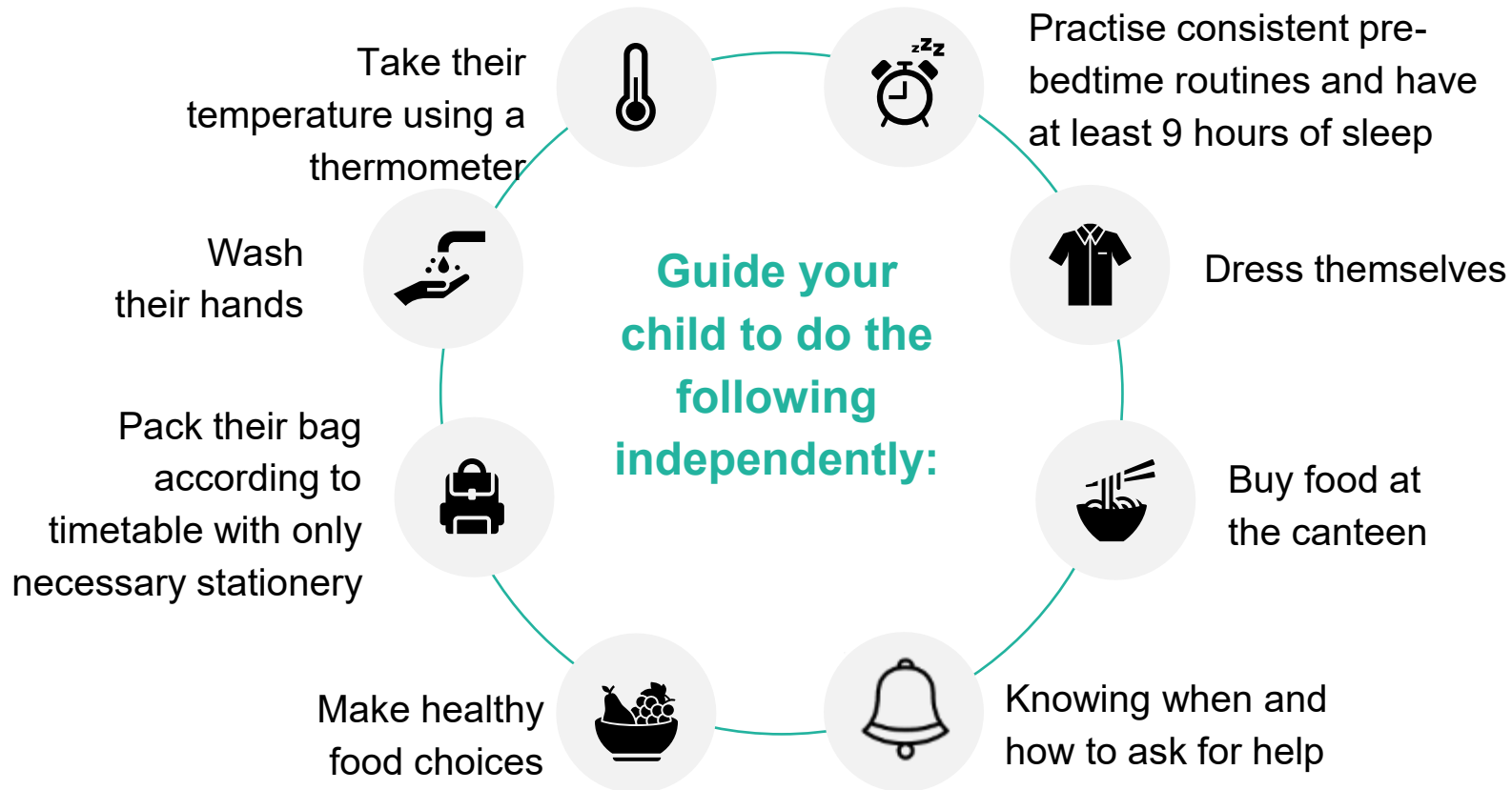


Find out more activities from the **P1 Parent-Child Role Playing Activity Kit**



# Developing Good Habits

**Routines help your child build confidence and learn to manage things by themselves.**



# Nurturing Values and Positive Attitudes

**Values guide our words and actions, and develop character strengths and dispositions. You can encourage your child to:**



Reflect on how to show care and concern, and respect for their friends and family members



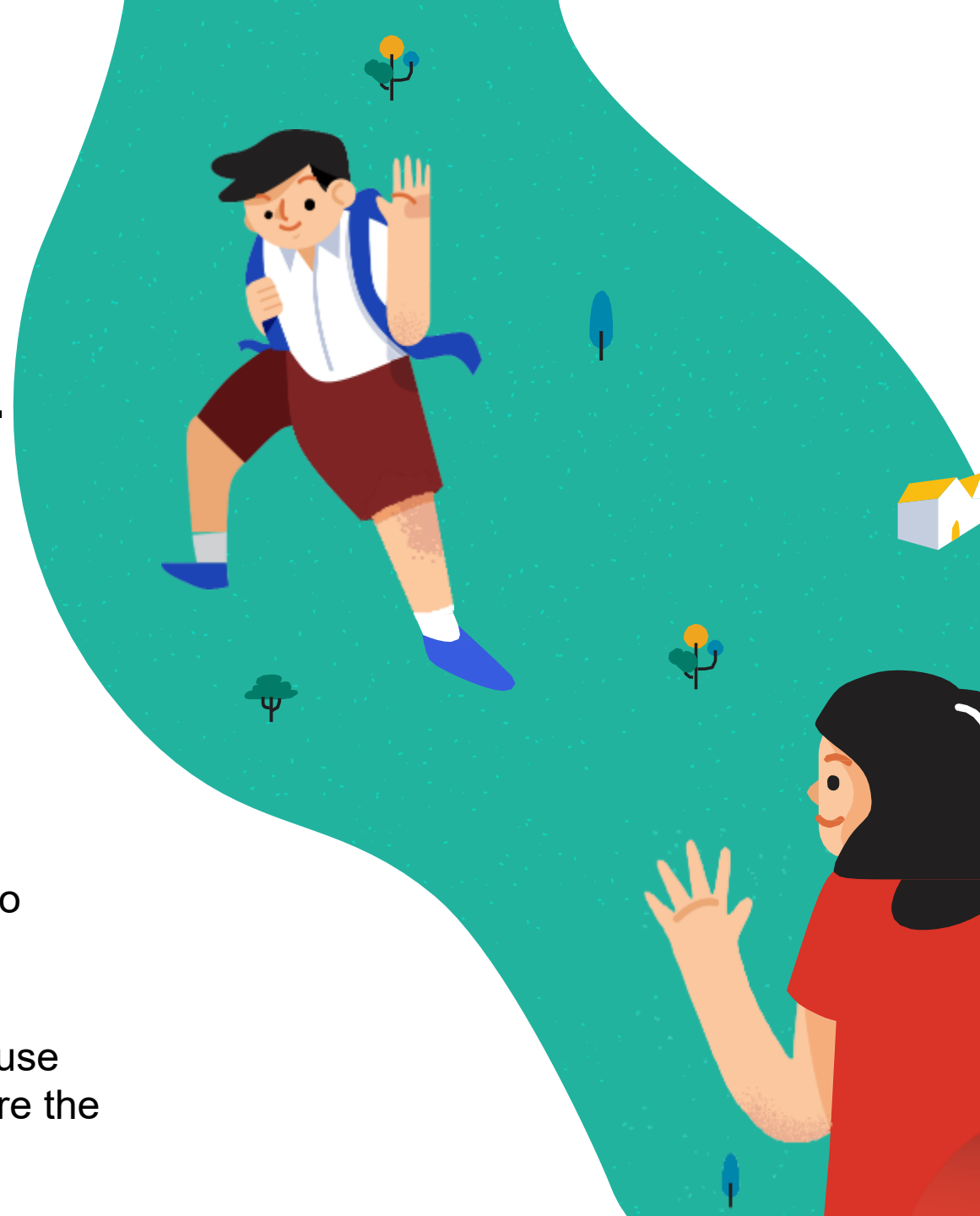
Ask questions about their experiences in school, at home and of the world around them



Reflect on learning experiences and try ways to do something better



Persevere even when faced with challenges and use these experiences as a teachable moment to share the importance of building resilience in life



# School- Home Partnership

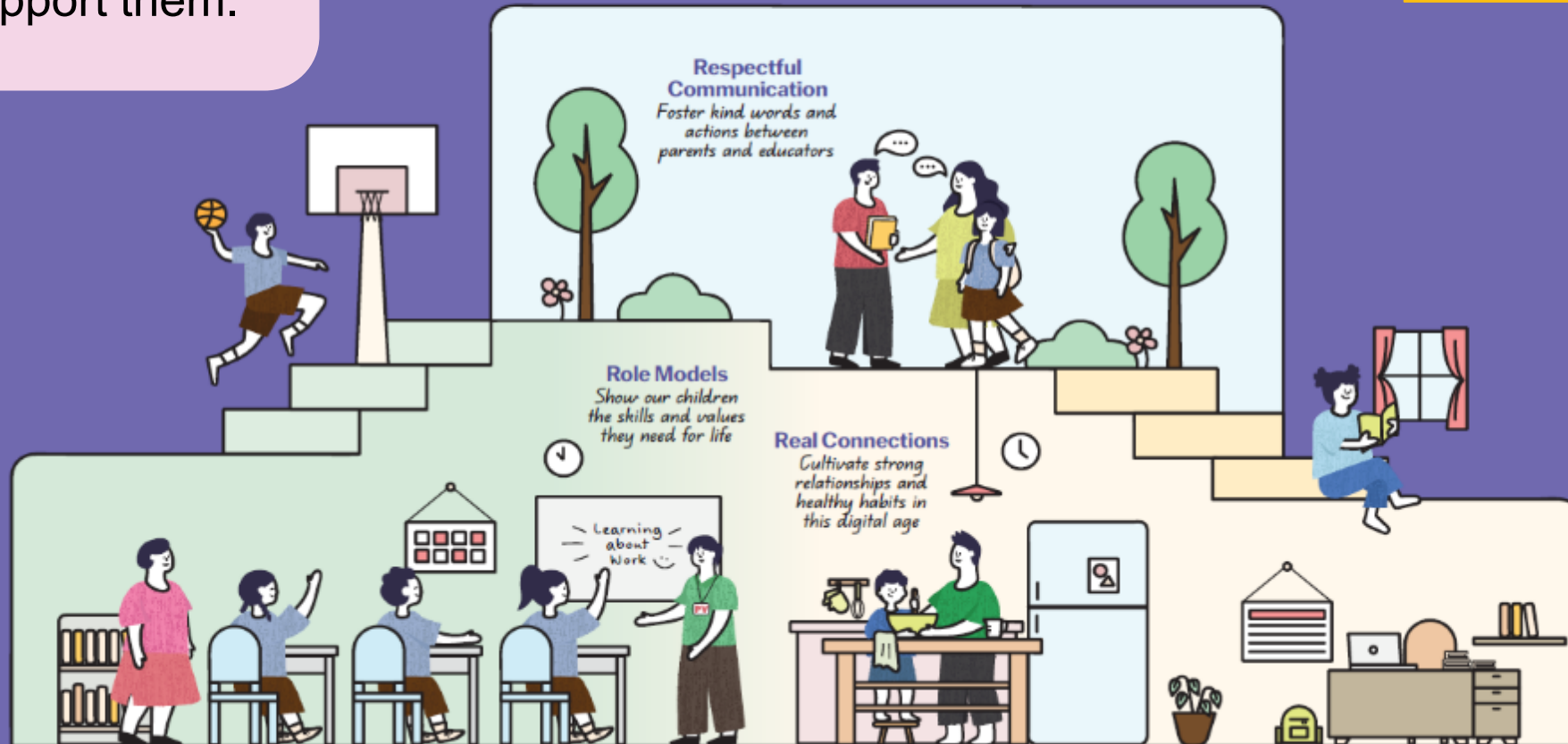
Our children do best when schools and parents work hand in hand to support them.

Guidelines for School-Home Partnership

## Raising a Happy, Confident, and Kind Generation Together

### Note for schools:

For more information that can be included in this section, please refer to the notes section.





# 3 areas we can work together on to foster School-Home Partnership

**1 Respectful Communication**

**2 Role Models**

**3 Real Connections**



# Respectful Communication

## Foster kind words and actions between schools and educators



Listen to and understand each other's perspectives and concerns regarding each child



Communicate kindly using official channels. Teachers are not required to share their personal mobile numbers



Respect each other's time by communicating during working hours



**Note for schools:** For more information that can be included in this section, please refer to the notes section.

# Role Models

**Show our children the skills and values they need for life**



Find joy in everyday experiences with our children



Instill confidence by encouraging responsibility and believing in our children's abilities



Model good values in words and actions



*Check out this video on MOE YouTube for tips on how parents can support the social-emotional learning of their children.*

**Note for Schools:** For more information that can be included in this section, please refer to the notes section.

# Real Connections

**Cultivate strong relationships and healthy habits in this digital age**

Establish good habits for our children to stay confident and in control of their technology use

Build strong bonds through shared experiences and meaningful conversations



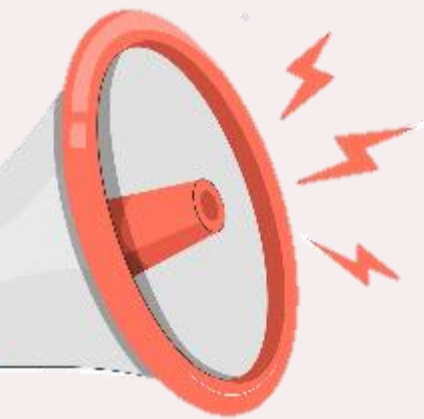
Provide a balanced mix of engaging online and offline activities, at school and at home



*Check out the refreshed Guidance on Screen Use in Children by MOH.*







# Join Us! Parent Support Group (PSG)

A team of dedicated parents supporting each other in nurturing their children. Network, share and learn with fellow parents by involving yourself in initiatives such as Parenting Workshops and Career Talks for P5 and P6 students.





Ministry of Education  
SINGAPORE

# Here's to a Great Start to Riverside Primary School!





# **School Experience**

## **The P1 Curriculum Experience**

### **The Opening Days**



# School Experience





# Riverians Belong!

## Inclusiveness and Affiliation

- Every Riverian belongs to a [Class](#)
- Every Riverian belongs to a [House](#)
- Every Riverian belongs to a [CCA](#) (from P3)
- Every Riverian belongs to the [School](#)



# Values-Based Naming of Our 7 P1 Classes

Class Distribution:

Gender

Ethnic Group

**S**trength (of Character)

**P**erseverance

**A**daptability

**R**esponsibility

**K**indness

**L**eadership

**E**nthusiasm

Together, they spell **SPARKLE** because we believe every child can shine.



# The House System

## Sparkling Gems



Yellow  
Topaz



Red  
Ruby



**House Colour = Colour of PE T-Shirt for Child**  
**Siblings should be in the same House**

# Daily Routine and Weekly Schedule

## Reporting Time

- All students are to be in school by **7.35am** for attendance taking.
- Students arriving at the school foyer **after 7.35am** will be considered late.
- The Flag-Raising Ceremony begins at **7.40am**.

## Lesson Hours

- Lessons run from 7.45am to 1.30pm each day
- For **P1 & P2**, dismissal is slightly earlier (**around 1.25pm**) to support a safe and orderly dismissal process



# Daily Routine and Weekly Schedule

## Recess and Snack Break

- Recess (P1 & P4): 9.00am – 9.30am
- **Midday Snack Break:** for 10min in the classroom between 12.00pm to 12.15pm  
*(Light and dry snacks only, e.g. biscuits, fruit, sandwiches)*

## Afternoon Activities

- There are **no regular afternoon** activities for P1.
- If an activity or event is scheduled, parents will be informed in advance.

# P1/P2 Curriculum Time Allocation

Subjects	Curriculum Time	Periods
English Language	7h 30min	15 (30min) periods
CL/ML/TL	6h	12 (30min) periods
CCE in CL/ML/TL	1h	2 (30min) periods
Mathematics	4h 30min	9 (30min) periods
Science	---	---
Social Studies	30min	1 (30min) period
Art	1h	2 (30min) periods
Music	1h	2 (30min) periods
PE and HE	2h	4 (30min) periods
Assembly/FTGP	1h	2 (30min) periods
PAL	1h 30min	3 (30min) periods
Recess	2h 30min	5 (30min) periods

# P1 Parent Engagement & Key Touchpoints

- **P1 Parents' Orientation (20 Nov 2025 )**
  - Welcome & orientation for parents
  - Overview of the **Riverside Curriculum Experience**
- **P1 Parents Seminar (2 Jan 2026 – 7.40 to 10.30 am)**
  - Part 1 - Sharing by P/VPs and AYH
  - Part 2 - HOD MTL & ST/Learning Support
- **Parent–Child–Teacher Conference (PCTC) – May 2026**
  - 3-way conversation to reflect on your child's progress
  - Opportunity to strengthen home–school partnership

# Our Co-Curricular Activities (CCAs)

CCA Sports	CCA Arts	CCA Clubs	CCA Uniformed Groups
<ul style="list-style-type: none"> <li>• Badminton</li> <li>• Basketball</li> <li>• Floorball</li> <li>• Football</li> <li>• Netball</li> </ul>	<ul style="list-style-type: none"> <li>• Choir</li> <li>• Art and Design</li> <li>• Modern Dance</li> <li>• String Ensemble</li> <li>• Theatre</li> </ul>	<ul style="list-style-type: none"> <li>• Chefs Club</li> <li>• Environmental Science Club</li> <li>• PLAY Club</li> </ul>	<ul style="list-style-type: none"> <li>• Scouts</li> </ul>



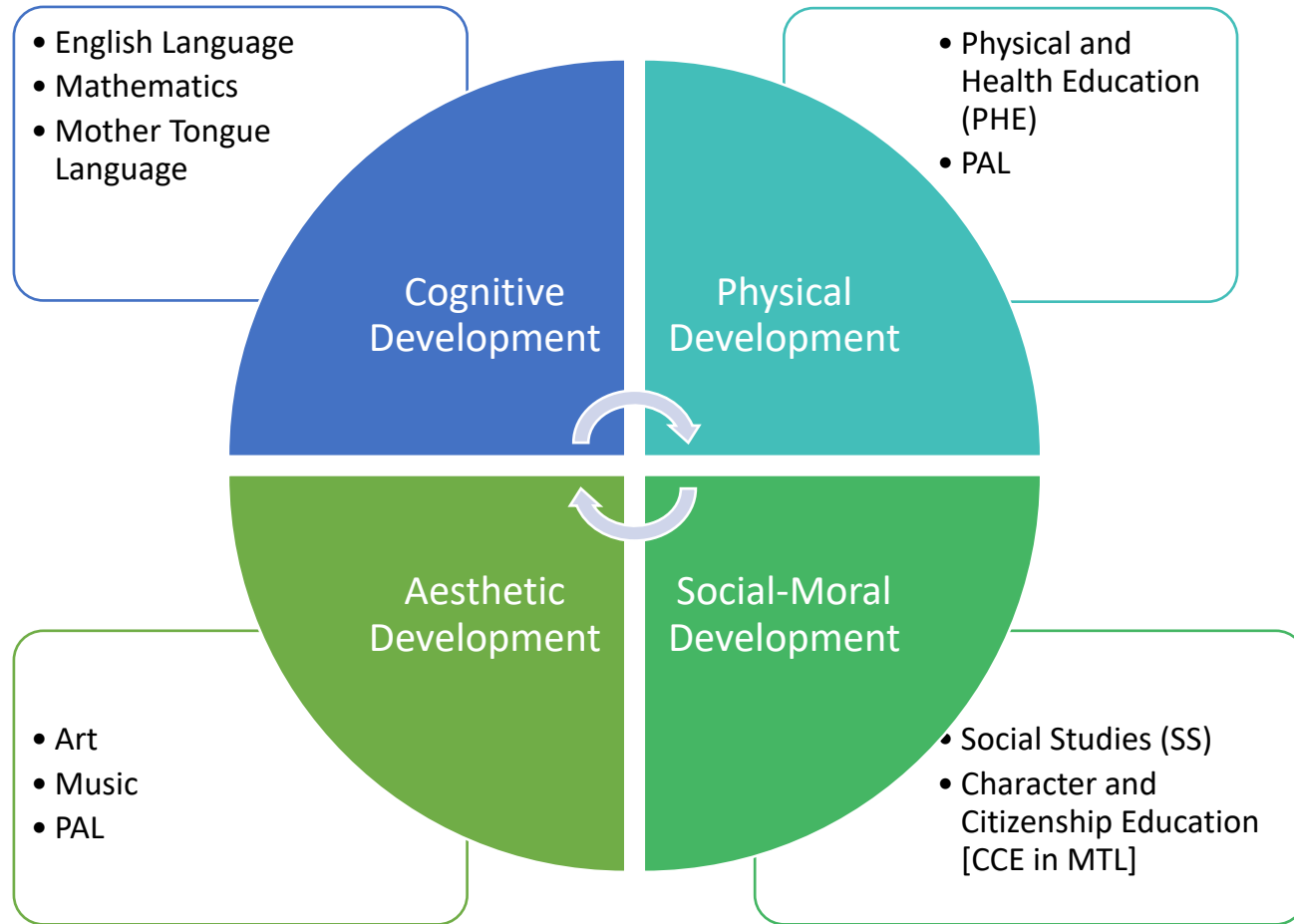


# The P1 Curriculum Experience

*Confidence  
Curiosity  
Communication  
Cooperation*



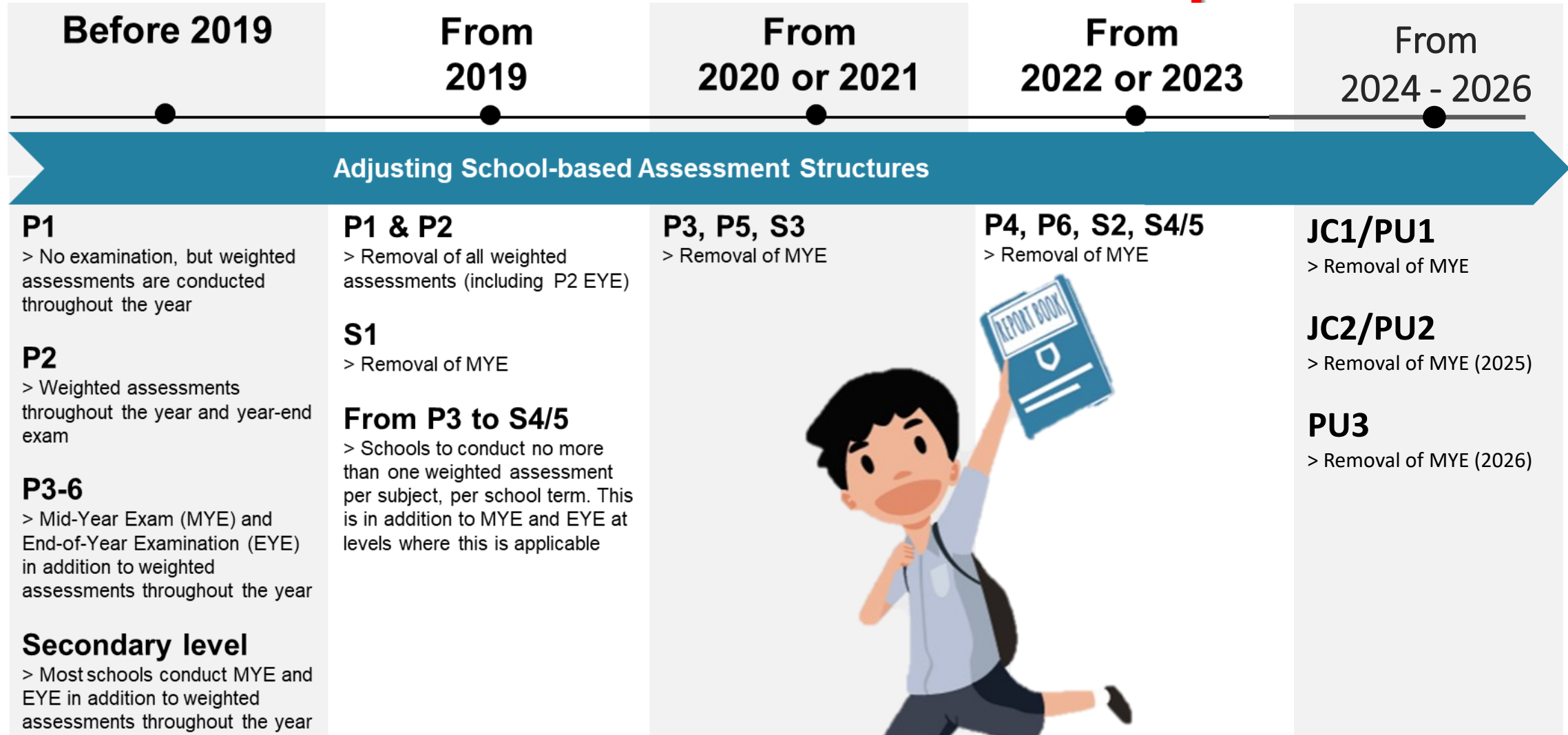
# The P1 and P2 Curriculum



## Notes

1. Science is formally learnt from P3 onwards.
2. Literacy and numeracy are the focuses for P1/P2.
3. At P1/P2, there are Learning Support Programmes for English Language and Mathematics.

# The Education Landscape



| Learn for Life | Joy of Learning | Holistic Development |

## No Weighted Assessment at P1/P2

# Why No Weighted Assessments at P1 & P2

- **Supporting Transition & Well-Being**
  - Supports a smooth adjustment from K2 to P1
  - Reduces anxiety and stress
- **Building Stronger Learners**
  - Encourages joy and curiosity in learning
  - Strengthens intrinsic motivation to improve
  - Focuses on foundational skills, habits, and values
- **Meaningful Feedback for Growth**
  - Provides continuous updates on learning progress
  - Offers richer, personalised feedback in place of marks



# P1/P2 Learning Outcomes

Our curriculum is designed to build strong foundations in:

- **English Language** - Reading, writing, speaking & listening
- **Mathematics** - Numeracy, problem-solving, mathematical thinking
- **Mother Tongue Language** - Language skills, cultural awareness, identity

And to develop the whole child through:

- **Physical Education** - Motor skills, health, teamwork
- **Art** - Creativity, expression, imagination
- **Music** - Rhythm, performance, appreciation
- **Social Studies** - Self, family, community & citizenship



# Example of Academic Learning Outcomes

Subject	Primary 1	Primary 2
Mathematics	<ol style="list-style-type: none"><li>1) Understand numbers up to hundred.</li><li>2) Understand addition and subtraction.</li><li>3) Add and subtract numbers.</li><li>4) Understand multiplication and division.</li><li>5) Identify, name, describe and sort shapes.</li><li>6) Tell time to the hour/half hour.</li><li>7) Measure and compare lengths using everyday objects.</li><li>8) Read and interpret picture graphs.</li></ol>	<ol style="list-style-type: none"><li>1) Understand numbers up to thousand.</li><li>2) Solve mathematical problems involving addition and subtraction.</li><li>3) Multiply and divide numbers within multiplication tables.</li><li>4) Identify, name, describe and sort shapes and objects.</li><li>5) Tell time to 5 minutes.</li><li>6) Compare and order objects by length, mass or volume.</li><li>7) Read and interpret picture graphs with scales.</li><li>8) Understand fractions.</li></ol>

# Example of Non-Academic Learning Outcomes

Subject	Primary 1	Primary 2
Art	<ol style="list-style-type: none"><li>1) Identify simple visual qualities in what they see around them.</li><li>2) Ask questions about what they see.</li><li>3) Draw from their imagination and observation.</li><li>4) Play with a variety of materials and tools to make art.</li><li>5) Share their imagination, thoughts and feelings through artmaking.</li><li>6) Show interest in looking at a variety of artworks.</li><li>7) Talk about what they see, feel and experience using basic art vocabulary of elements and principles of design such as lines, shapes, colours, patterns and proportion.</li></ol>	Same Learning Outcomes as P1

# Learning Dispositions

No.	SPARKLE Value	Actions/Behaviours
1	Perseverance <ul style="list-style-type: none"><li>• Resilience and grit</li></ul>	<ul style="list-style-type: none"><li>• The student works independently.</li><li>• The student works towards learning goals in a determined and disciplined manner.</li></ul>
2	Adaptability <ul style="list-style-type: none"><li>• Open-mindedness</li></ul>	<ul style="list-style-type: none"><li>• The student is open to learning in a new situation.</li><li>• The student acts on feedback and uses it to improve performance.</li></ul>
3	Responsibility	<ul style="list-style-type: none"><li>• The student attends school regularly.</li><li>• The student is punctual for school and class.</li><li>• The student completes homework assignments.</li><li>• The student takes care of school property.</li><li>• The student adheres to school rules and routines.</li></ul>
4	Kindness	<ul style="list-style-type: none"><li>• The student is well-mannered and gracious.</li><li>• The student cooperates well with others in a group learning setting.</li><li>• The student respects ideas shared by peers.</li><li>• The student renders help to others in need.</li></ul>
5	Enthusiasm <ul style="list-style-type: none"><li>• Joy of learning</li><li>• Curiosity</li></ul>	<ul style="list-style-type: none"><li>• The student participates actively in lessons across subjects.</li><li>• The student listens attentively and actively.</li><li>• The student asks questions relevant to the area of learning.</li><li>• The student seeks clarification when in doubt.</li></ul>



# Designing the P1 Curriculum Experience

We intentionally...

- Avoid early, overly formal academic routines
- Allow children time and space to adjust at a developmentally appropriate pace

So that we can:

- ✓ Reduce anxiety and stress
- ✓ Build strong foundational skills and values
- ✓ Nurture confidence, curiosity and the joy of learning

# Riverside Curriculum Practices at P1

- **NO** spelling tests in Term 1
- Focus on building strong **reading habits** and **language confidence**
- **Minimal homework** to protect rest and play time
- Parents encouraged to **read to** and **read with** their child daily
- **NO** regular afternoon activities for P1
- Afternoons are protected for **rest**, **play** and **family time**.

# Riverside Curriculum Practices at P1

## How We Teach and Learn at Riverside (P1)

- **Engaging & Meaningful Learning**
  - Experiential, hands-on activities
  - Rich tasks with multiple solutions (not just one right answer)
  - Learning supported by technology
- **Thinking & Expression**
  - Class discussions and sharing of ideas
  - Self- and peer-assessment opportunities
- **Deepening Understanding**
  - Extension activities after learning journeys
  - Ongoing informal tracking of learning and progress, not just tests





# Support Programmes

## P1 Learners

### Learning Support Programme (LSP)

#### - English

- Targeted small-group support for early literacy development

### Learning Support Programme (LSM)

#### - Mathematics

- Strengthens early numeracy skills and builds confidence

### TRANSIT

- Transition Support Programme to help selected students adjust socially, emotionally and behaviourally to P1 routines





# P1 Signature Programmes

- **Holistic Development & Character Building**
  - Form Teacher Guidance Period (FTGP)
  - Values in Action (VIA): Project EARTH & Keep Singapore Clean Movement
  - Student Leadership Opportunities
- **Experiential & Creative Learning**
  - Programme for Active Learning (PAL)
  - Applied Learning Programme: PlayWorks (P1 LegoWorks)
  - Learning Fiesta (Learning Journeys & P1 Mother Tongue Cultural Camp)
- **School Identity & Community**
  - The House System: HouseWarming & Riverside Sports & Games Day
  - National Education: 4 Commemorative Events







# Learning Journey to the Zoo



**Learning  
Experiences  
- English Language -  
Sandwich  
&  
Moon Cake  
Making**







# P1

## Mother Tongue Language (MTL)

### Cultural Camp





# ALP PlayWorks P1 LegoWorks Module





# P1 Programme for Active Learning (PAL)





## P2 Programme for Active Learning (PAL) Creative Drama





# Inspiring Riverians

## Every Riverian Can Shine! ✨



**The Story of The Amazing Star**



# Inducting Riverians

## *A Comprehensive Induction Programme in the Opening Weeks*

### **What Your Child Will Experience**

- Activity-Based Induction
- Getting to Know My School Environment
- Getting to Know My Teachers
- Getting to Know My Friends
- Developing My Lifeskills



***Nurturing SPARKLES, Friendships & a Confident Start to Primary 1***

# Inducting Riverians

## *A Warm & Confident Start to Primary School*

As our new P1 Riverians arrive with their families, our teachers and leaders warmly welcome, provide reassurance, and guide them into their Orientation Groups. These precious first-day moments help every child feel **safe, supported**, and **ready to begin their Riverside adventure**.





# Inducting Riverians

## *Building Independence During Recess*



Wash hands **properly**



Queue **responsibly** at the stalls



Select and **purchase** food



Practise good **table** manners and tray return routines



Find seats and  
enjoy meal with friends



# Inducting Riverians

*A Caring Start Through Peer Buddying*

Older students guide and support every P1 child as they settle in.





# Inducting Riverians

## *Knowing My School*

### Helping Our P1 Riverians Explore Their New School Environment





# Inducting Riverians

*Developing My Lifeskills*

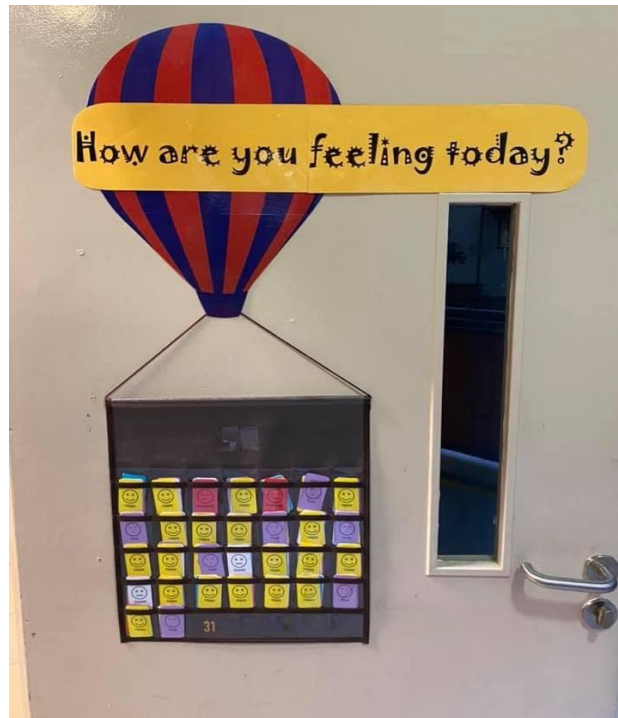
**Nurturing Independence, Responsibility & Confidence**





# Supporting Riverians

## Helping Our P1 Riverians Understand and Express Their Feelings



*Developing Curiosity, Cooperation & Communication*

# Celebrating Riverians

Recognising Effort, Growth & Excellence

## School-Based Recognition:

Monthly Model Class Award

Termly Star of Riverside Award

## Class-Based Awards:

STAR Learner Award

GEM Learner Award





## A Strong Start in the First Weeks of School



**Building Connections**  
*Knowing My Teachers*  
*Knowing My Friends*



**Understanding My Environment**  
*Knowing My School*  
*Knowing My Routines*



**Growing Life Skills**  
*Activity-Based Learning*  
*Personal & Social Skills*



# The Opening Days





# The Opening Days

## School Bags and Packing of Items

- Refer to the checklist “**P1 Items to Bring on Opening Days**” and pack according to the indicated days.
- Items brought will be collected and kept in the Classroom.  
(This helps your child carry a lighter and more manageable school bag.)
- All items/stationery **MUST be clearly labelled** with your child's name and class.
- Trolley bags are allowed but **not encouraged** for safety and ease of movement.

The school has introduced Orientation Group students since 2025. Your child will begin in & remain in this group until **Monday, 12 Jan 2026**

During this time, we have planned a range of will give students the opportunity to engage v school life.

Parents will be informed of their child's class Jan 2026.

Date	Subject	Items to Bring to School
3 January 2026 (Monday)	English Language	<ul style="list-style-type: none"><li>• 100 LKS Handwriting 1</li><li>• PS Towards Booklet 1</li><li>• Close Passage Reading and Comprehension Booklet 1</li><li>• Close Passage Reading and Comprehension Booklet 2</li><li>• AS Broad Line Exercise Book - 1</li><li>• English Language File (Purple) - 1</li><li>• Writing File (Black) - 1</li></ul>
4 January 2026 (Tuesday)	Mathematics	<ul style="list-style-type: none"><li>• Primary Mathematics Practice Book 1A</li><li>• AS Big Square Exercise Book - 1</li><li>• Mathematics File (Blue) - 1</li><li>• AS Whiteboard Duster Set</li></ul>
7 January 2026 (Wednesday)	Social Studies Health Education Others	<ul style="list-style-type: none"><li>• Social Studies Primary 1 - Activity Book</li><li>• My Physical Education Journal P1</li><li>• My P1 PEP Journal - PS</li><li>• Report Book</li><li>• History Assessment Portfolio</li></ul>
13 January 2026 (Tuesday)	Modern Tongue Languages	<p>Chinese Language</p> <ul style="list-style-type: none"><li>• CC 1, 2, 3, 4, 5, 6, 7, 8, 9, 10, 11, 12, 13, 14, 15, 16, 17, 18, 19, 20, 21, 22, 23, 24, 25, 26, 27, 28, 29, 30, 31, 32, 33, 34, 35, 36, 37, 38, 39, 40, 41, 42, 43, 44, 45, 46, 47, 48, 49, 50, 51, 52, 53, 54, 55, 56, 57, 58, 59, 60, 61, 62, 63, 64, 65, 66, 67, 68, 69, 70, 71, 72, 73, 74, 75, 76, 77, 78, 79, 80, 81, 82, 83, 84, 85, 86, 87, 88, 89, 90, 91, 92, 93, 94, 95, 96, 97, 98, 99, 100</li></ul> <p>Malay Language</p> <ul style="list-style-type: none"><li>• M.L.P.S. (C) - Workbook 1A</li><li>• M.L.P.S. (C) - Workbook 1B (Book 1 &amp; 2)</li><li>• Character and Citizenship Education 1 (Malay)</li><li>• AS Broad Line Exercise Book - 1</li><li>• AS Broad Line Exercise Book - 2</li><li>• Mother Tongue Language File (Yellow) - 1</li></ul> <p>Tamil Language</p> <ul style="list-style-type: none"><li>• T.A.P.S. (C) - Workbook 1A</li><li>• T.A.P.S. (C) - Workbook 1B (Book 1 &amp; 2)</li><li>• T.A.P.S. (C) - Workbook 1C (Book 1 &amp; 2)</li><li>• Character and Citizenship Education 1 (Tamil)</li><li>• AS Broad Line Exercise Book - 1</li><li>• AS Broad Line Exercise Book - 2</li><li>• Mother Tongue Language File (Yellow) - 1</li></ul>

Other items not indicated above can be kept at home until further instructions are given.

# The Opening Days

## Orientation Groups (P1 Induction Period)

Since 2025, the school has introduced **Orientation Groups** to support a smooth transition into Primary 1.

**Update:** Your child will begin the year in an Orientation Group and remain in this group until **Monday, 12 January 2026**, when Form Class placements will also be released.

During this period, students will participate in a series of induction programmes designed to help:

- Engage with their peers and build new friendships
- Learn school routines and expectations
- Settle confidently into school life



# The Opening Days

## Form Class Allocation & Timetable

- Parents will be informed of their child's **Form Class on Monday, 12 January 2026**.
- Your child will bring home the timetable and a welcome letter from the Form Teachers on Tuesday, 13 January 2026.

Your child may begin **packing their school bag according to the timetable** from the next day onwards.

Parents are kindly reminded not to write the **group names** on the books when submitting them for collection until the class allocation is finalised on 12 January.

# The Opening Days

## P1 Name Badge

- Your child has been given a **clip-on name badge** today.
- Please ensure your child **wears the name badge daily** for the first **two weeks** of the school ( Term 1, Weeks 1 & 2)
- On the badge, **please circle your child's dismissal arrangements** clearly.
- This helps our teachers and P1 support team ensure a **safe and smooth dismissal process** for every child.



Name: Name

Class: Class

House: House

Dismissal: Gate 1 / Gate 4 / MK Gate /School-based Student Care

Commit Schoolhouse SCC /External Student Care /

School Bus No. \_\_\_\_\_ External Student Bus \_\_\_\_\_





# School Uniform and PE Attire

School Uniform



P E Attire



- Students are to wear the prescribed school uniform and PE attire.
- Modifications to the uniform or PE attire are not allowed.

# School PE Attire

## PE Attire

- To be worn during PE lessons and selected PAL modules
- P1 students may remain in their PE attire for the whole school day on days when they have PE or PAL
- **Colour of PE T-shirt:** Based on House colour

## Iron-On Name Tags

- Please iron on the name tags on both the school uniform and PE shirt upon receiving them in February
- **Colour of Name Tag for 2026 P1 Cohort: Yellow**

# School Uniform and PE Attire

## Iron-on Name Tag Placement

**Boys**

On the edge of the shirt pocket

**Simon Tan**



**PE Attire**

**Boys and Girls**  
Above the school crest

**David Chong**



**Girls**

Above the school crest on the blouse

**Sally Toh**





# School Uniform and PE Attire



## White Shoes & Socks Requirements

- Low-cut white canvas shoes
- Plain white socks **visible above the ankles**
- **Ankle socks are not allowed**
- Shoes should be **fully white** (no prominent brand logos)



# The Opening Days

## P1 Student Arrival

- Remember your child's **Group Number**. It is shown on the name badge.
- On the **first day of school** (Friday, 2 Jan 2026), parents may accompany their child to the school **foyer**
  - Hand your child over to the staff-ushers at the foyer.
  - Your child will then be guided to their Classroom.
  - Parents are kindly reminded **not to move beyond the foyer**.
- If you are walking your child to school, please enter via **Gate 1 or Gate 4**.
- Note: **MK gate will not be opened on 2 Jan 2026 for arrival**.
- If you are driving, please drop your child off at the school foyer and then park in the neighbouring estate carpark.



# The Opening Days

## The usual P1 recess

- The usual P1 recess is from 9.00am to 9.30am.
- However, during the P1 Induction Week :
- **On Friday, 2 Jan 2026:**
  - ❖ i) Groups 1 – 3 → will go for recess from 9 to 9.35 am
  - ❖ ii) Groups 4 – 7 → from 9.45 to 10.20 am
  - ❖ **Parents may remain in the canteen during recess on Day 1 only.**



# The Opening Days

## Dismissal Procedure

Students will be dismissed based on their arrangements:

### 1. School Bus

- Students taking the school bus will gather at the **foyer** for attendance-taking.
- They will be escorted to board their respective buses.

### 2. Parent Pick-Up

- Parents may pick up their child at:
  - **Gate 1**
  - **Gate 4**
  - **MK Gate**
- *Staff will lead students to the correct gate. Parents are to wait **at** the designated gate.*

### 3. Student Care Arrangements

- **Commit Schoolhouse SCC:** Students will be **handed over directly to SCC staff**.
- **External Student Care:** Parents must arrange with SCC staff/bus to pick the child at the **foyer**.

### 4. Visual Identification

- Coloured dot stickers on name badges for:
  - Commit Schoolhouse SCC
  - External SCC
  - School Bus / External Bus

### 5. Parent Reminder: Please ensure your child knows:

- **Who** is picking them up each day, and
- Their **correct dismissal point**.

# The Opening Days

## Call to Parents! – Supporting Your Child from the Start

- Check the **Student Handbook** daily for notes from the teacher or for information on homework assignments.
- Check **Parents' Gateway** regularly for urgent notifications and school updates.
- Visit the school's **Facebook page** for posts on event highlights and reminders.
- Refer to the school's **website** for letters, important information and announcements.
- For further queries, email us at [riverside\\_ps@moe.edu.sg](mailto:riverside_ps@moe.edu.sg).



# **SCHOOL SYSTEMS & ADMINISTRATIVE MATTERS**



# OUTLINE

## 1. SAFETY AND SECURITY MATTERS

- Arrival and Dismissal
- Road Safety
- Visitor Management
- Early Dismissal Arrangement

## 2. HEALTH AND WELLNESS MATTERS

- Students who fall ill during curriculum time
- Students with Medical Conditions
- School-Based Health Screening and Immunisation Exercise
- Healthy Culture in Riverside Primary

## 3. SCHOOL SERVICE PROVIDERS

- School Bus Vendor
- School Bookshop
- School Uniform Vendor
- Student Care Centre
- School Dental Services

## 4. ADMINISTRATIVE MATTERS

- Submission of Forms
- MOE Financial Assistance Scheme (FAS)
- Payment of School Fees
- Communication Platforms – Parents Gateway
- Consent on Photography/Videography



- Arrival and Dismissal
- Road Safety
- Visitor Management
- Early Dismissal Arrangement

# SAFETY AND SECURITY

## Morning Arrival

- **Vehicle Drop-Off**

- ☐ (7.00 to 7.35am) Drive into the school premises from Gate 2 (guard post);
  - ☐ Drop off your child at the school driveway; and drive out from Gate 3.
  - ☐ Students are to get ready before reaching the school driveway and alight quickly.
  - ☐ Parents are not to alight from the car.
- ☐ (After 7.35am) Drop off your child at Gate 1 (guard post) and allow your child to walk in independently.
- ☐ Please note that speed limit in the school premises is **15 KM/H**

- **Pedestrian Drop-Off**

- ☐ (7.00 to 7.35am) See off your child at either Gate 1 (guard post), Gate 4 (outside canteen) or MKGate.
- ☐ (After 7.35am) See off your child at Gate 1 (guard post).
- ☐ Do not enter the school compound.



# SAFETY AND SECURITY

## Dismissal Arrangements

### Dismissal Points:

#### a) School Bus and External School bus

- Gather at Foyer for attendance-taking before boarding the bus

#### b) Gate 1, Gate 4, MK Gate

- Students will be led by Teachers/Staff to the gates for Pick-up by Parent or Authorised Adult
- Parents are to wait for your child at the respective Gates

#### c) School-Based Student Care Centre (SCC)

- Form Teachers will hand over to SCC Teachers at the Foyer

#### (a) External Student Care Centre

- Parent to arrange with external SCC staff to pick up student at the foyer

# SAFETY AND SECURITY

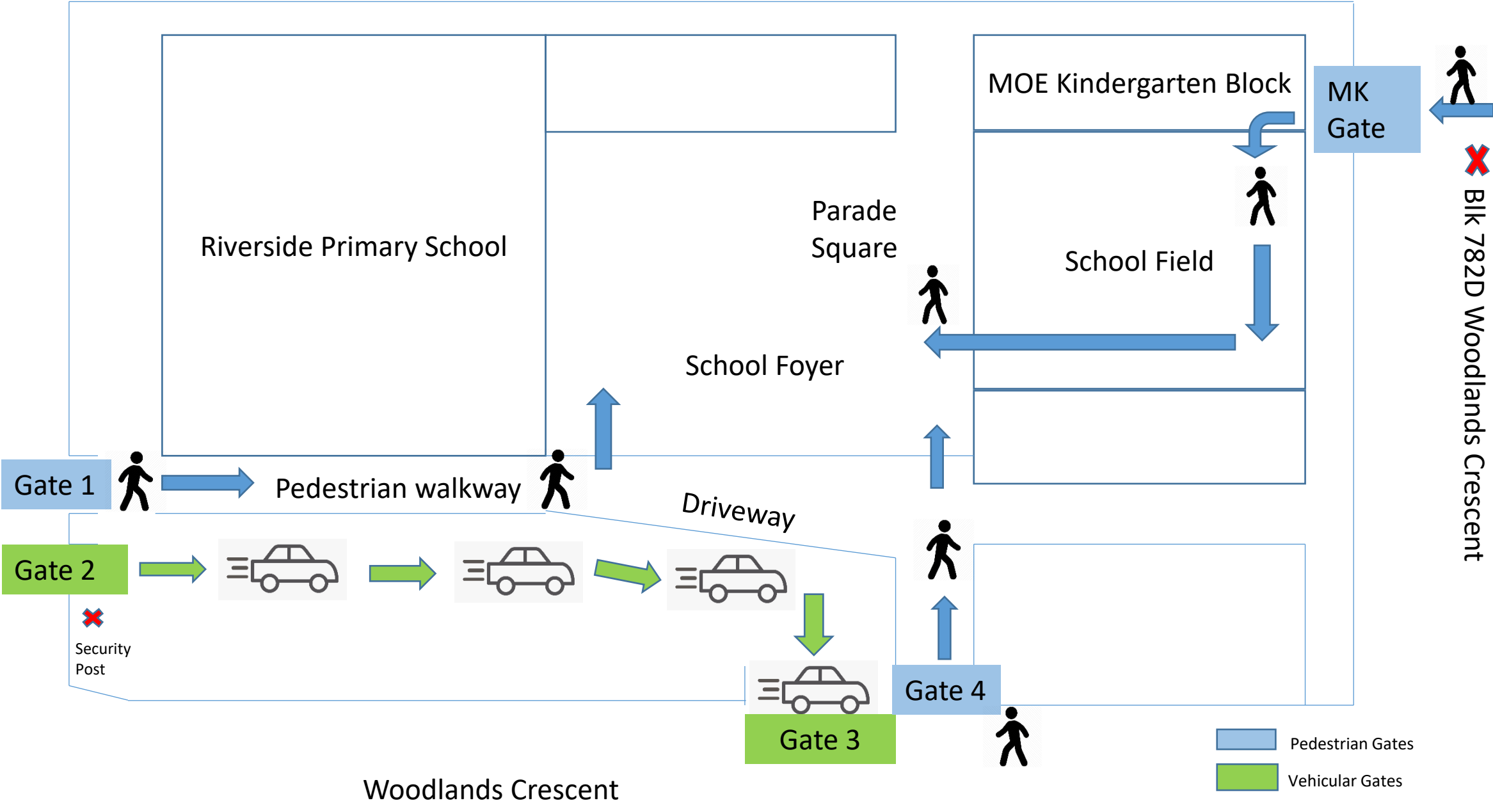
## Road Safety

- ☐ If you are driving to pick your child during dismissal, please park your car at the nearby carpark and walk to the school gate to wait for your child.
- ☐ For the safety of the students and other road users, do not wait along the road outside school.
- ☐ The road outside the school is one-lane both ways and parking your car along the road will cause obstruction and pose danger to other road users.

LOCATION MAP OF SCHOOL GATES (RIVERSIDE PRIMARY SCHOOL)

Blk 786D Woodlands Drive 60

Woodlands Crescent





# SAFETY AND SECURITY

## Opening Hours of School Gates

Gate	Open for Arrival	Closed	Open for Dismissal	Closed	Open for Late Afternoon Dismissal
Gate 1 (pedestrian gate near security post)	6.30am to 7.50am	7.50am to 1.15pm	1.15pm to 2.00pm	2.00pm to 3.45pm	3.45pm to 6.00pm
Gate 4 (pedestrian gate near school canteen)	6.30am to 7.50am	7.50am to 1.15pm	1.15pm to 2.00pm	2.00pm to 3.45pm	3.45pm to 6.00pm
MK Gate (pedestrian)	7.00am to 7.35am	7.35am to 1.30pm	1.15pm to 2.00pm	2.00pm to 3.45pm	3.45pm to 4.30pm
Gate 2 (vehicular entrance)	6.30am to 7.35am	Closed from 7.35am	Closed from 7.35am	Closed from 7.35am	Closed from 7.35am
Gate 3 (vehicular exit)	6.30am to 7.35am	Closed from 7.35am	Closed from 7.35am	Closed from 7.35am	Closed from 7.35am

# SAFETY AND SECURITY

## Visitor Management

- ❑ NO ENTRY During School Hours, unless parents have an appointment with teachers or to pick up sick child
- ❑ Parents with appointment or picking up sick child are required to:
  - ❖ Register at the guard post
  - ❖ Obtain a pass / sticker to enter the school
  - ❖ Display your pass / sticker at all times
  - ❖ Approach the General Office for assistance
  - ❖ **DO NOT** move into the classrooms or student activity areas
  - ❖ Sign out and return the pass/sticker when leaving.

# SAFETY AND SECURITY

## Leaving School Earlier than Dismissal Time

**Parents are to:**

- ☐ Inform the Form Teacher or General Office (GO) in advance if it is planned (eg medical appointment, piano exam etc);
- ☐ Call the GO if it is a last minute arrangement stating reason for early dismissal;
- ☐ Register at the guard post and report to the GO;
- ☐ Wait in the GO for the child to be brought down;
- ☐ Fill up Early Dismissal Form and sign the child out to leave school earlier; and
- ☐ Pass the Early Dismissal card to the security guard before leaving school.



- Healthy Culture in Riverside Primary
- Students who fall ill during curriculum time
- Students with special medical conditions
- School-Based Health Screening and Immunisation Exercise

# HEALTH & WELLNESS OF STUDENTS

## The Riverside Way

### **No Drinks Stall in School Canteen**

Raising Healthy Children Together

### **No-Frills Birthday Celebrations**

No cakes or tidbits. No goody bags.

Cultivation of culture of simplicity and appreciation

Promotion of healthy lifestyle

Safeguarding of children's safety (e.g. food allergies )



# HEALTH & WELLNESS OF STUDENTS

## When a child is ill



A child who is ill with fever, flu or any illness should:

- Inform the Form Teacher,
- See a doctor,
- Rest at home for the full duration indicated on the Medical Certificate,
- Recover fully before returning to school.



# HEALTH & WELLNESS OF STUDENTS

## When a child falls ill during school hours



If the child falls ill in school, the Form Teacher or the General Office will contact the parents.

A parent or an authorised adult is expected to come to school and bring the child home.

***Remember to always keep the Form Teacher or the General Office updated on any change in contact information!***

# HEALTH & WELLNESS OF STUDENTS

## **Children with Medical Conditions or Needing Special Care**

- ☐ Share the information with the school and work out a management plan together.
- ☐ Obtain a report or letter from the doctor and submit a copy to the Form Teacher.
- ☐ Ensure that your child brings the prescribed medication for the specific medical condition to school every school day.
- ☐ Ensure that the medication is clearly labelled with your child's name and class.
- ☐ Ensure that your child knows how to take the medication or use it on himself/herself.
- ☐ The school and teachers are NOT to administer medication to your child. The school staff can help to supervise your child while he/she is taking or using the prescribed medication
- ☐ Make an appointment for a meeting with the Form Teacher in early-January.

# HEALTH & WELLNESS OF STUDENTS

## School-Based Health Screening and Immunisation Exercise

- Confirmed dates will be made known at a later juncture.
- Consent forms will be issued before the exercise.
- Get ready the child's Health Booklet with the Immunisation Records.
  - If these cannot be found, please visit the Polyclinic to purchase a new Health Booklet and get a copy of the immunisation records.



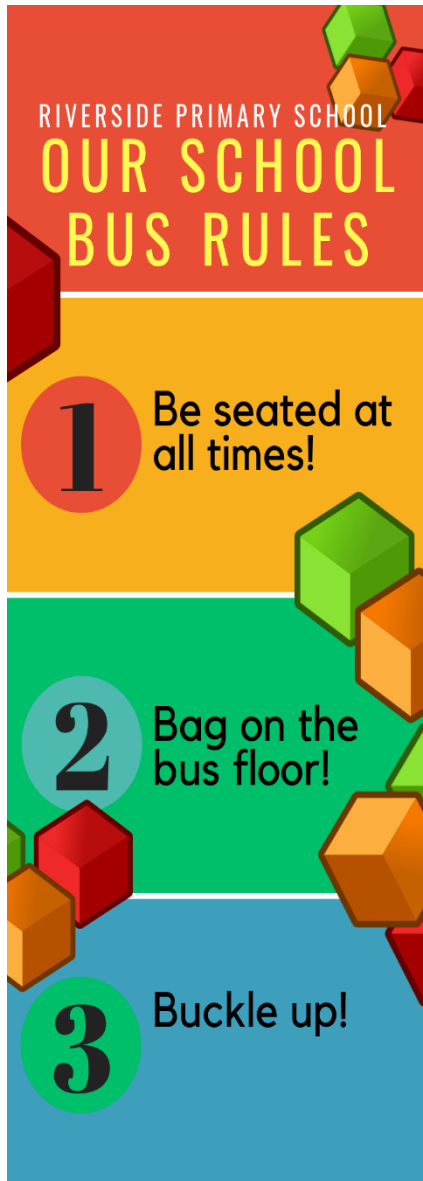


- School Bus Vendor
- School Bookshop
- School Uniform Vendor
- Student Care Centre
- School Dental Services

# School Bus Service



- ☐ School Bus vendor: **Chang Chen Pte Ltd. Contact no: 67604835/90905835**
- ☐ Bus arrival in school is before 7.20am.
- ☐ Pick-up time depends on distance and route.
- ☐ Pick-up time will always be earlier in the starting weeks; and will stabilise after 2 to 3 weeks.
- ☐ Bus vendor will inform parents on the bus fee, vehicle number, pick-up and drop-off time in the last week of Dec.
- ☐ Teachers will conduct briefing on school bus safety and discipline.



# SCHOOL BOOKSHOP / UNIFORM VENDOR

## **School Bookshop**

- School Bookshop Vendor is Pacific Bookstore
- Opening Hours: 8.30am–3pm

## **School Uniform Vendor**

- School Uniform Vendor: Jeep Sing
- Shop: 4012 Ang Mo Kio Ave 10, #01-09, Singapore 569628
- In School: From 2<sup>nd</sup> Feb 2026 onwards, you may purchase uniform at the bookshop – 8.30am to 3pm (Mon – Fri)
- Set up counter in school Canteen – 2 Jan 2026 (9am to 3pm) & every Tue & Thurs in Jan 2025 (12pm to 3pm)



# School-Based Student Care Centre (SCC)

- Appointed Vendor: Commit Learning School House (CLS)
- Parents who wish to attend briefing by CLS, please stay back after this briefing.
- For further inquiry, please approach the SCC counter in the school canteen after the briefing.

# School Dental Service



- ☐ Dental Therapist: Ms Ouh Wei Qi
- ☐ Toothbrushing Programme for P1 students
- ☐ Dental Check-up for P1 students
- ☐ A consent form for your child to receive dental service will be sent to you via Parents Gateway in Jan 2026. Please give your consent by the given deadline in the consent form.

# School Canteen

- ☐ 5 Food Stalls (with at least 2 stalls serving Halal food)
- ☐ HPB's Healthy Meals in School Programme (HMSP)
- ☐ No Drinks Stall in the School Canteen
- ☐ Many Water Coolers within school premises
- ☐ Every child is to bring his/her water bottle to school every day.

## **Pocket Money for Recess**

- ☐ Please refer to the menu for each stall on school website.
- ☐ A set meal cost \$1.80 to \$2.00 depending on the portion.
- ☐ A set meal includes rice/noodles/bread, vegetables, fruit and meat or others
- ☐ Use of POSB Smart Buddy card/watch (next slides)





# The POSB Smart Buddy Programme

- Launched in Aug 2017, the POSB Smart Buddy Programme is the **world's first in-school wearable tech Programme** to enable a contactless payments ecosystem to help cultivate sensible saving and spending habits amongst young students.
- It has an **accompanying Smart Buddy mobile app** that allows parents to remotely manage their children's spending, savings and even set saving goals for their children, thereby helping their children cultivate saving habits in a digital and interactive way.
- Students will be able to use the POSB Smart buddy watch/card or School Smart Cards for payments of meals at school canteen or school bookshop.
- The POSB Smart Buddy Programme also supports students who **receive school meal subsidies** under the financial assistance scheme.
  - P1 Parents whose child is on FAS are to apply for the POSB Smart Watch/Card by end of November 2025 to be able to use it for meal provision at the canteen in January 2026.

# Device/card for Smart Buddy NETS

- Parents may apply the POSB Smart Buddy watch and card via <https://www.posb.com.sg/personal/deposits/bank-with-ease/posb-smart-buddy>. Application is **FREE**.
- The Smart Buddy NETS payment terminals in schools accept the following cards:

Smart Buddy Card/ Watch



School Smartcard/ EZ-Link Card



# Cash Payments

- Application for POSB Smart Buddy is optional for students who **are not** on financial assistance.
- Students can still continue to use CASH for their meal payments at School canteen or purchases at the School Bookshop.

## For Students: Free Smart Buddy Watch/ Card

Tap to pay



Features of Watch:

- Date/ Time
- Fitness/ Steps Tracker
- Heart Rate Tracker
- Nickname
- Reminders/ Alerts
- Stopwatch (coming soon)

## For Parents: Smart Buddy Mobile App



Download free mobile app



Features of Mobile App:

- Manage child's allowance
- Monitor spending/ savings
- Set saving goals, stamp savings
- Monitor health/ steps/ calories
- Newsfeed on Education-related deals and info



- Submission of Forms
- MOE Financial Assistance Scheme (FAS)
- Payment of fees
- Communication Platforms – Parents Gateway
- Consent on Photography/Videography

# SUBMISSION OF FORMS

In our P1 Orientation Letter sent via PG on 21 Oct 2025, parents have been advised to submit the following forms:

## **Compulsory Forms to Submit:**

1. MOE Pupil Data Form – submit online from 1 Dec 2025
2. GIRO Form – Submit online. However, if you are unable to do so, please approach the enquiry counter in the canteen after this briefing.
3. Riverside Primary School Student Information Form – online by 5 Nov 2025, extended to 21 Nov 2025.
4. Edusave Standing Order Form – Submit online
5. Travel Declaration – submit via Parents Gateway

## **Optional Forms (If applicable)**

1. MOE Financial Assistance Scheme (FAS) – submit online
2. Mother Tongue Language (MTL) Form – if you are selecting a MTL that differs from the child's race
3. School Bus Form

# MOE Financial Assistance Scheme (FAS)

- ☐ All applications for MOE's Financial Assistance Scheme are to be submitted online. The link is accessible via PG app.
- ☐ Applicants are reminded NOT to purchase books and uniforms until the application outcome is known. Items purchased prior to approval outcome of the application will not be reimbursed.
- ☐ Parents who have submitted the application should receive the outcome within one month from the date of eFAS application, unless additional documentation or verifications are needed.
- ☐ For any clarification, please call General Office at 63654490.



# PAYMENT OF FEES

From 1 January 2024, the standard miscellaneous fee and second-tier miscellaneous fee have merged into a single-tier miscellaneous fee to simplify the fee structure.

The single-tier miscellaneous fee is S\$13, and can be fully paid for by Edusave.

**Note:**

Please apply to pay for your child's school and/or enrichment fees through the online **Edusave Standing Order Form**.

Parents are strongly encouraged to apply for **GIRO** to facilitate payment and/or processing refund (if any). Please refer to your letter for instructions.

# Parents Gateway

- The Parents Gateway is a mobile app developed by MOE and GovTech for parents.
- It will be used by MOE and school to disseminate MOE-wide and school-wide initiatives, announcement, programmes and activities.
- It also allows parents to declare your child's travel plans and parents to give consent for your child to participate in school's programmes and activities.
- We strongly encourage you to download "Parents Gateway" on your mobile phone (available on iOS and Android platforms only)
- You will be required to use your SingPass 2-Step verification (2FA) to access Parents Gateway.

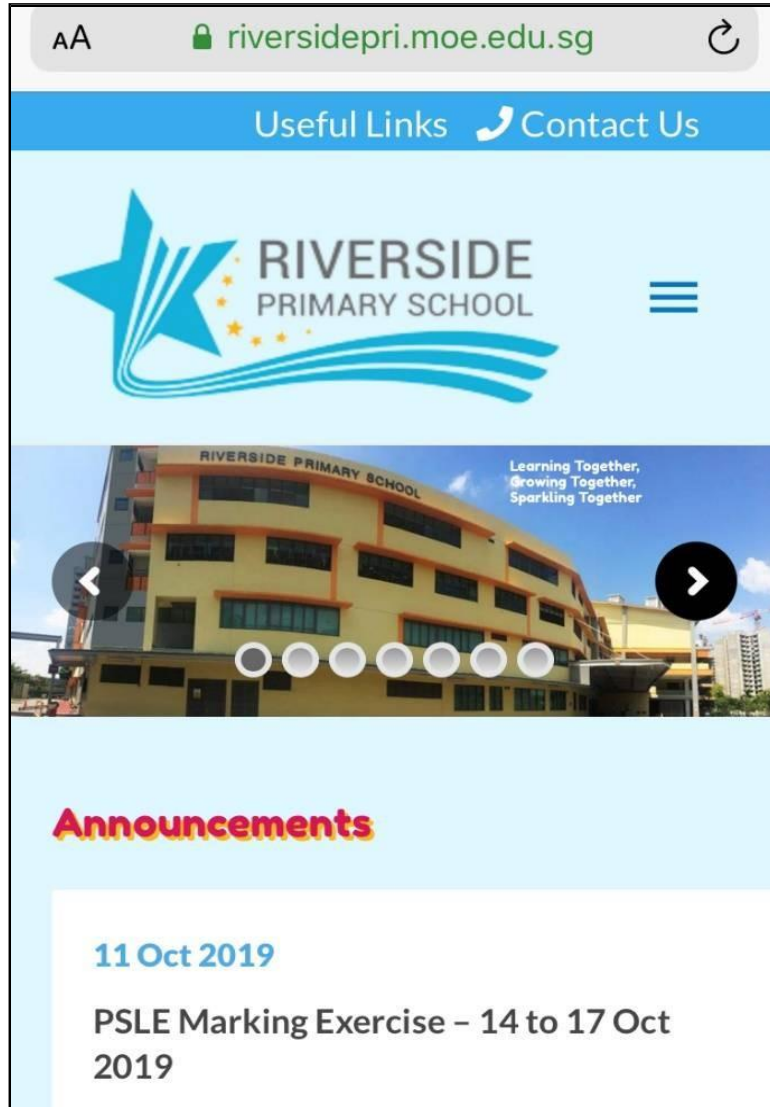


# Consent on Photography/Videography

- We take photographs or video images of students and parents during school activities and events such as classroom lessons, CCAs, school camps and school concerts.
- The school may use and publish such photographs and/or video recordings in school publications, website, social media channels, and other communication channels.
- Please notify the school if you do not want to be featured in any of the school photographs or videos.



# Staying Connected



(General Office Phone Number)

6365 4490

(Email) [riverside\\_ps@moe.edu.sg](mailto:riverside_ps@moe.edu.sg)

(Website) [www.riversidepri.moe.edu.sg](http://www.riversidepri.moe.edu.sg)

(Facebook Page)

<http://facebook.com/Riversideprimaryschoolsingapore>

(Instagram Page)

[https://www.instagram.com/riversideprimary\\_sg](https://www.instagram.com/riversideprimary_sg)





**Thank you for joining us - your child is now part of the  
Riverside Story. ✨**



*Thank You!*